

CREEK 5350SE SPECIFICATION

Measured at 230V or 115 V

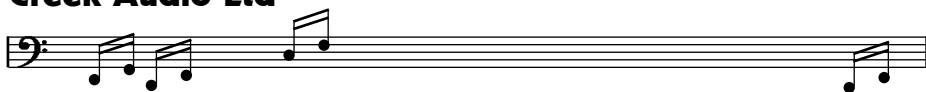
| | |
|--|-------------------------------------|
| POWER OUTPUT (both channels) | 90 Watts into 8 Ω |
| POWER OUTPUT (one channel) | 110 Watts into 8 Ω |
| POWER OUTPUT (one channel) into 4 Ω | 180 Watts |
| <i>Not recommended for use into more than two pairs of 8 Ω loudspeakers.</i> | |
| OUTPUT CURRENT into 1 Ω | > 40 Amps RMS |
| TOTAL HARMONIC DISTORTION (20 Hz to 20 kHz) | < 0.05% |
| FREQUENCY RESPONSE | 3 Hz to 25 kHz - 1 dB |
| SLEW RATE | > 50 V per μ S |
| GAIN | 44 |
| INPUT SENSITIVITY Passive | 580 mV line input |
| INPUT SENSITIVITY With line stage | 390 mV |
| PRE-AMP OUTPUT LEVEL | 660 mV 5 k Ω |
| SIGNAL TO NOISE RATIO ('A' weighted) | > 105 dB |
| SEPARATION (line inputs) | > 60 dB at 1 kHz |
| MM PHONO SENSITIVITY AND IMPEDANCE | 3.5 mV 47 k Ω (when fitted) |
| MC PHONO SENSITIVITY AND IMPEDANCE | 0.75 mV 1 k Ω (when fitted) |
| POWER CONSUMPTION (at idle) | 40 W |
| POWER CONSUMPTION (full power 10% THD) | 340 W |
| WEIGHT | 7kgs, 15.5lbs |
| SIZE | 430 x 70 x 280 mm, 17" x 2.4" x 11" |
| MAINS VOLTAGE @ 60Hz | 100V Japan, 115V North America |
| @ 50Hz | 230/240V Europe, Asia and UK |

MAINS VOLTAGE AND FREQUENCY IS INTERNALLY SET FOR THE COUNTRY OF USE

Creek Audio Ltd reserves the right to change or modify the specification of its products without prior warning.

Creek Audio Ltd

Designed and made in the UK.



12 Avebury Court, Mark Road, Hemel Hempstead HP2 7TA, England

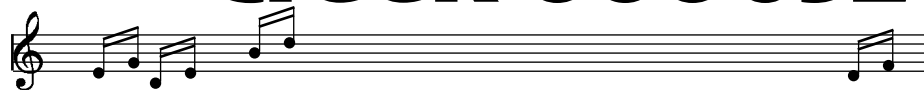
Tel: +44 (0) 1442 260146

Fax: +44 (0) 1442 243766

E-mail: info@creekaudio.com

Internet: www.creekaudio.com

Creek 5350SE



Operating Instructions



Thank you for purchasing the 5350SE. You are now in possession of a State of the Art Integrated Amplifier. The functions and operation of the 5350 Special Edition are very simple. However, the following notes are provided to explain all aspects of its design and use.

MAINS CONNECTION

When unpacking the amplifier please keep the packing material in a safe place for possible future use. In the pack there is a separate mains cable suitable for connecting to the mains supply in the country of use. The IEC socket end of the cable should be firmly inserted into the connector on the rear panel marked "Mains Input".

Remember, do not overload the mains wall socket with too many plugs or adaptors. The high quality performance of the amplifier will be impaired if the electrical supply to it is in poor condition. If in doubt, consult a qualified electrician or your dealer.

The "Mains Input" connection is also fitted with a fuse, specifically suited to the supply voltage of the country of use. The correct value is clearly marked on the rear panel next to the Mains Input.

Should it be necessary to replace the fuse, ensure that you use the same type as specified on the rear panel, i.e. 5 x 20mm cartridge type:

T 3.15 A surge resisting for 220-240V 50Hz AC,
T 6.3 A surge resisting for 110-120V 60Hz AC
T 8A surge resisting for 100V (Japan).



SRC1 Remote Handset



LOUDSPEAKER CONNECTIONS

The loudspeakers should be connected using a suitable pair of cables designed specifically for audio use. Two pairs of screw terminals marked 'A' allow for either bare wire or spade lug connectors to be passed through the hole or around the bush. Tighten the terminal fully after fitting the speaker wire. Please consult your dealer for advice if you are unsure.

It is very important to connect the loudspeakers to the loudspeaker terminals in the correct phase. Cables are normally polarised with a line or a raised bump on the positive side. If one channel is not connected in the same fashion as the other, a severe loss of bass performance and a spreading of the stereo image will result.

A second set of terminals marked 'B' allow the user to select from the rotary control in the centre of the front panel, the option of having two pairs of speakers running separately, or together. The options include speakers off, when using headphones, speakers A, speakers B plus speakers A and B together.

It is not recommended to use loudspeakers of less than 4W resistance or more than two pairs of 8W speakers running from the amplifier at one time. However, bi-wiring of one pair of speakers, using the four terminal posts, can improve the sound of your system (consult your dealer for more details).

N.B. It is very important not to short the loudspeaker cables together when the other ends are still connected to the amplifier, otherwise permanent damage can result. If it is necessary to move or change the location of your loudspeakers, make sure that you switch off the amplifier from the mains first.

INPUT CONNECTION AND SWITCHING

On the 5350SE all six line inputs, including the tape input, have some gain (active circuitry), which can if required, be increased or decreased by changing the setting of the selector switch on the internal plug-in gain PCB. Consult your dealer if you feel you need more advice. It is also possible to make the pre-amp section passive by removing the gain PCB and replacing it with a passive link PCB. A reduced sensitivity will result.

The tape input is in a loop with the tape output, enabling you to record anything you can hear, or in other words, monitor recordings without interrupting the signal. The rotary selector switch on the left-hand side of the amplifier is used to select and listen to any of the desired inputs. The second rotary selector switch on the 5350SE, marked Record, allows you to record any input independent of the input you are listening to.

As all the line input levels are the same, it is not necessary to use the precise inputs as designated. You may, for example, plug a CD player into the Tuner input and obtain exactly the same result or performance as the dedicated CD input. However, for added flexibility, the first input on the 5350SE can be used either for vinyl disc or auxiliary line.

An optional low noise MM or MC Phono Amplifier Module is available, which replaces the standard passive link pcb, internally. Check with your dealer for more details if required.

VOLUME LEVEL

The volume control, situated in the right hand side of the front panel, is used to alter the relative level of the sound output from the amplifier. It is important to realise that the volume control only acts to reduce, or attenuate, the incoming signal to the power amplifier stage. The maximum power of the amplifier is available only if the level of signal available from the line level equipment is sufficient to drive it to clipping.

The volume control is necessary to adjust the level from one piece of equipment to another. It does not increase the power of the amplifier and if it is found necessary to have the volume control set to a position which is considered to be high, before the desired level of volume is obtained, it does not necessarily mean that the amplifier is having to work "flat-out". The selector switch on the gain board may need to be set to a different level setting to increase the level as required (options include +3dB, +6dB and +10dB). Consult your dealer if you feel you need more advice.

OPERATING THE 5350SE

Make sure that the unit is on a suitable table, shelf or Hi-Fi equipment cabinet. It is important to allow adequate ventilation to the heatsink in the centre of the unit. Avoid obstruction of the ventilation slots on the top and bottom of the amplifier. It may be necessary to place the amplifier on the top of other equipment to allow for this. Always have the volume control set at minimum (counter-clockwise) when switching on and off, to avoid any sudden loud noises. Select the desired input on the rotary selector and switch on the amplifier with the push button marked Power on the right hand side of the front panel. Adjust the volume gently and settle down to listen.

Your 5350SE amplifier is designed to give you years of reliable use. If you need more assistance, it is always advisable to go back to the supplying dealer for his expert help. If you are unfortunate enough to need service work to be carried out on your amplifier, it should be returned to your dealer in the original packing material if possible.

REMOTE CONTROL

The Creek Amplifier Remote Control handset allows the user to operate the volume control, input selection and mute by an infra-red (RC5) link. The up/down buttons in the centre of the handset are for motorised volume up + down, the large single button in the centre is the mute button. Source selection buttons are the white ones at the bottom left.

When the 5350SE is first switched on, the power LED will glow yellow until the protection circuit confirms everything is OK. The LED will then turn green and, if selected, the loudspeaker relays will click on. Volume changes will cause the Power LED to flash green. Pressing the mute button will cause the LED to turn yellow. Pressing the button again or increasing the volume will un-mute the amp and the LED will turn green again. Adjusting the volume downwards by remote will not un-mute the amp. Please note, muting can only be cleared by the remote handset or by pressing the amplifier power switch off for 10 seconds and on again. If the amplifier stops working and the Power LED turns red, it indicates a fault. Return the amplifier to the supplying dealer for inspection.

N.B. The 5350SE is designed to work properly in normal domestic operating conditions. However, the amplifier's performance may be seriously affected if sited near to, or in the room with, a radio transmitter such as a mobile phone or CB radio rig, etc. Re-siting the 5350SE or the radio will normalise the situation.